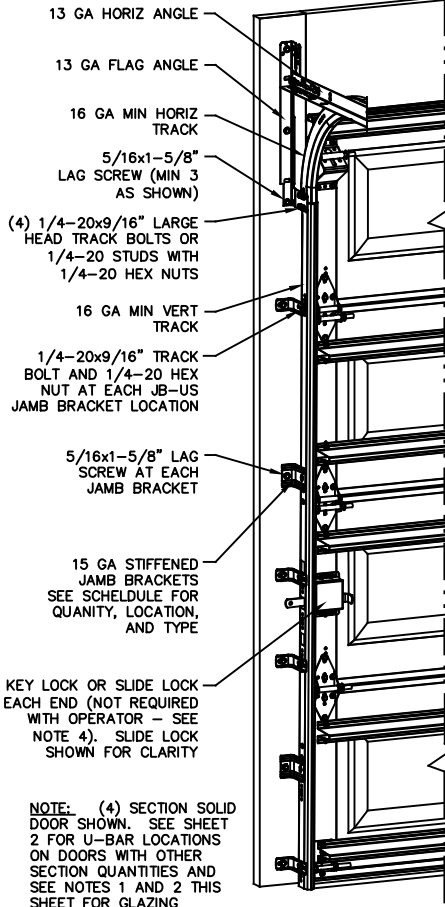
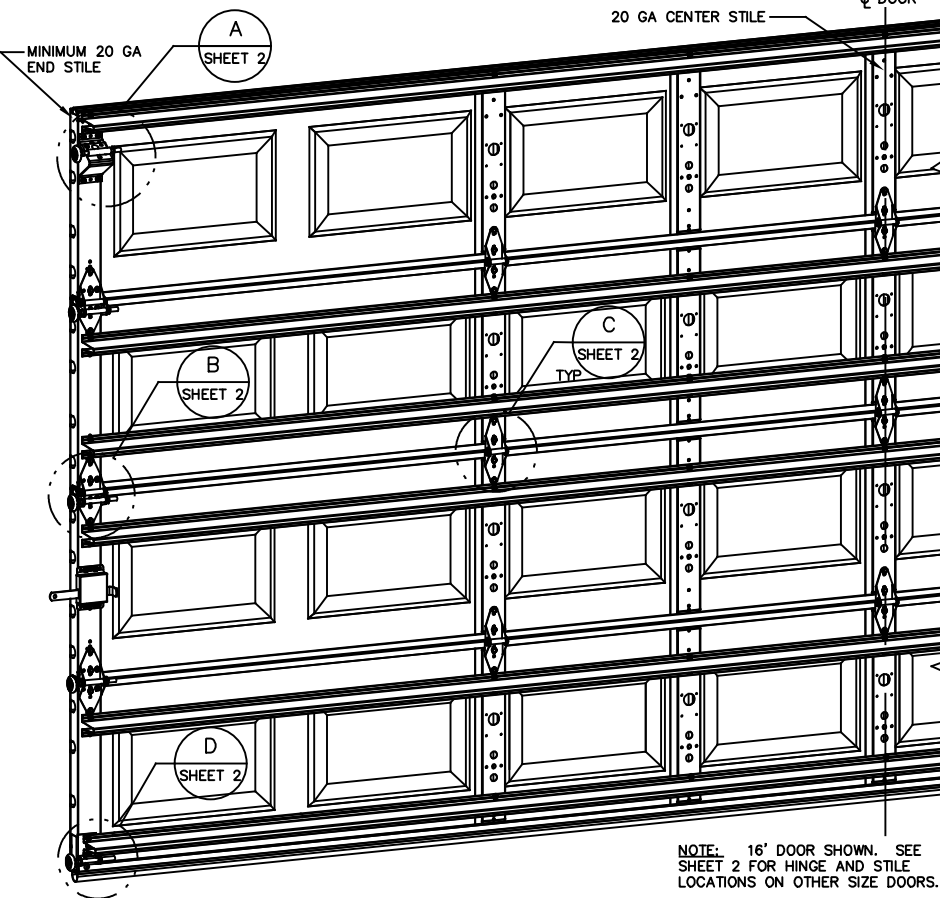


NOTES:

- NON IMPACT GLAZING OPTIONS:
A. 16 X 9.75 CLEAR OPENING INSTALLED TOP OR INTERMEDIATE SECTION.
GLAZING SSB (0.090") MINIMUM.
MAY INCLUDE DECORATIVE INSERTS
NOT AVAILABLE IN MORE THAN ONE SECTION.
DOES NOT SATISFY WINDBORNE-DEBRIS.
- IMPACT GLAZING OPTION:
16.75 X 9.75 CLEAR OPENING
GLAZING 1/4" GROOVED POLYCARBONATE ALUMINUM FRAMES WITH 10 SCREWS MAY INCLUDE DECORATIVE INSERTS INSTALLED IN TOP OR INTERMEDIATE SECTION.
NOT AVAILABLE IN MORE THAN ONE SECTION.
SEE ASSEMBLY DETAIL ON SHEET 2.
- VINYL OR WOOD DOOR STOP NAIL A MAXIMUM OF 6" O.C. MUST OVERLAP TOP AND BOTH ENDS OF PANELS MINIMUM 7/16" TO MEET NEGATIVE PRESSURES.
- KEY LOCK, SLIDE LOCKS, OR OPERATOR REQUIRED.
- LOUVER OPTION - .032" MINIMUM LOUVERS IN MOLDED FRAMES SCREWED TOGETHER WITH A MINIMUM OF (10) #8x1" SCREWS INSTALLED IN THE BOTTOM SECTION. LOUVERS ARE NOT IMPACT RESISTANT AND DO NOT MEET THE REQUIREMENTS FOR WIND-BORNE DEBRIS REGIONS.
- SECTION STEEL TO HAVE A MINIMUM 25 GA THICKNESS.
- THE DESIGN OF THE SUPPORTING STRUCTURAL ELEMENTS SHALL BE THE RESPONSIBILITY OF THE PROFESSIONAL OF RECORD FOR THE BUILDING OR STRUCTURE AND IN ACCORDANCE WITH CURRENT BUILDING CODES FOR THE LOADS LISTED ON THIS DRAWING.
- DOOR JAMB TO BE MINIMUM 2" X 6", GRADE 2 SOUTHERN PINE. REFER TO JAMB CONNECTION SUPPLEMENT FOR ATTACHMENT TO SUPPORTING STRUCTURE.
- FOR LOW HEAD ROOM LIFT CONDITIONS, TOP BRACKET SHALL BE A 13 GA LHR 7/4 TOP BRACKET WITH A MINIMUM OF (3) 1/4-14x7/8" SELF DRILLING CRIMPITITE SCREWS IN LIEU OF THE BRACKET SHOWN ON THIS DRAWING. U-BAR ON TOP SECTION SHALL BE INSTALLED ON TOP OF LHR TOP BRACKETS.



NOTE: (4) SECTION SOLID DOOR SHOWN. SEE SHEET 2 FOR U-BAR LOCATIONS ON DOORS WITH OTHER SECTION QUANTITIES AND SEE NOTES 1 AND 2 THIS SHEET FOR GLAZING OPTIONS.



- REVISIONS**
- P1 MODIFIED NOTES TO STATE THAT LOUVERS ARE NOT IMPACT RESISTANT. GRT 6/29/07
 - P2 MODIFIED JAMB BRACKET SCHEDULE ALLOWING REPLACEMENT OF QI WITH JB-US. ADDED IMPACT RESISTANCE TO DOOR. ADDED MAX GLAZING DIMENSION TO NOTES SHEET 1. ADDED TRACK TO FLAG CONNECTION NOTE. GRT 11/10/07
 - P3 MODIFIED LOUVER OPTION. ADDED TEXAS LICENSE NUMBER TO TITLE BLOCK. ADDED IMPACT RESISTANT GLAZING. GRT 9/19/08
 - P4 UPDATED TITLE BLOCK AND IMPACT GLAZING GRT 4/16/12
 - P5 UPDATED TITLE BLOCK ESC 10/3/17
 - P6 UPDATED TITLE BLOCK. REV PER ER 31052 ESC 9/25/18
 - P7 UPDATED NOTES ADDED LHR DETAIL ER 31052 ESC 2/12/19
 - REV H ADDED IRC/IBC NOTE TLC 4/12/21

SUPERIMPOSED DESIGN PRESSURE LOADS ON SUPPORTING STRUCTURE

DOOR WIDTH	DOOR HEIGHT	UNIFORM LOAD EACH JAMB (PLF)
10'-0"	ALL	+150.0/-167.5
12'-0"	ALL	+180.0/-201.0
14'-0"	ALL	+210.0/-234.5
15'-0"	ALL	+225.0/-251.3
16'-0"	ALL	+240.0/-268.0

JAMB BRACKET SCHEDULE

DOOR HEIGHT	NO. OF SECTIONS	NO. OF JAMB BRACKETS (EACH JAMB)	TRACK TYPE	LOCATION OF CENTERLINE OF JAMB BRACKETS MEASURED FROM BOTTOM OF TRACK (ALL DIMENSIONS ± 2")
6'-6"	4	6	QI	2" (JB-US), 14" (QI), 23-1/2" (JB-US), 34" (JB-US), 44" (QI), 56" (JB-US)
6'-6"	4	6	FAT	2" (JB-US), 10" (JB-US), 21-3/4" (JB-US), 39" (JB-US), 48" (JB-US), 57-1/4" (JB-US)
7'-0"	4	6	QI	2" (JB-US), 14" (QI), 25-1/2" (JB-US), 34" (JB-US), 44" (QI), 63-1/4" (JB-US)
7'-0"	4	6	FAT	2" (JB-US), 10" (JB-US), 25-3/4" (JB-US), 36" (JB-US), 52-1/2" (JB-US), 63-1/4" (JB-US)
7'-6"	5	8	QI	2" (JB-US), 14" (QI), 24-1/2" (JB-US), 32-1/2" (JB-US), 43" (QI), 49" (JB-US), 62-1/2" (QI), 72" (JB-US)
7'-6"	5	8	FAT	2" (JB-US), 10" (JB-US), 22-3/4" (JB-US), 36" (JB-US), 45" (JB-US), 54-1/4" (JB-US), 63" (JB-US), 74-1/2" (JB-US)
8'-0"	5	8	QI	2" (JB-US), 14" (QI), 23" (JB-US), 34" (JB-US), 46" (QI), 58" (JB-US), 66-1/2" (QI), 75-1/2" (JB-US)
8'-0"	5	8	FAT	2" (JB-US), 10" (JB-US), 25-3/4" (JB-US), 39" (JB-US), 48" (JB-US), 57-1/2" (JB-US), 66" (JB-US), 75-1/2" (JB-US)
> 8'-0"				SEE NOTE BELOW

NOTE: (JB-US) FOLLOWING DIMENSION DENOTES SLOTTED JAMB BRACKET ATTACHED TO TRACK WITH 1/4-20x9/16" TRACK BOLT AND NUT. (QI) FOLLOWING DIMENSION DENOTES QUICK INSTALL JAMB BRACKET INSTALLED IN BUTTERFLY SLOT. NO ADDITIONAL HARDWARE NEEDED TO ATTACH TO TRACK. ALL DOORS GREATER THAN 8' IN HEIGHT REQUIRE USE OF CONTINUOUS WALL ANGLE. SEE SUPPLEMENT TRACK CHART FOR DETAILS.

COMPLIES WITH THE REQUIREMENTS OF IBC/IRC 2018.



A DIVISION OF OVERHEAD DOOR CORP
3395 ADDISON DRIVE
PENSACOLA, FLORIDA 32514
(850) 474-9890

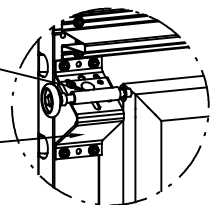
STATIC PRESSURE RATINGS		APPROVED SIZES		SCALE: N.T.S.		SIZE: A	
DESIGN (PSF):	+30.00/-33.50	MAX WIDTH:	16'-0"	DATE		NAME	
TEST (PSF):	+45.00/-50.25	MAX HEIGHT:	14'-0"	DRAWN	5/22/06	GRT	
IMPACT/CYCLIC RATED (YES/NO):	YES	MAX SECTION HEIGHT:	21"	CHECKED	4/12/21	TLC	
MODELS 8000/8100/8200				SHEET 1 OF 2			
WINDLOAD SPECIFICATION OPTION CODE 1123				DRAWING PART NO.		REV.	
				327017		H	

JOHN E. SCATES, PE
2560 KING ARTHUR BLVD #124-54
LEWISVILLE, TX 75056
FL PE 51737
TX PE 56308/F2203

PROFESSIONAL ENGINEER'S SEAL PROVIDED ONLY FOR VERIFICATION OF WINDLOAD CONSTRUCTION DETAILS.

12 GA ROLLER SLIDE ATTACHED TO BRACKET WITH 5/16-18 BOLT & NUT IN CENTER SLOT AND 1/4-20x9/16" TRACK BOLT & 1/4-20 HEX NUT THROUGH ANY TWO ALIGNING HOLES

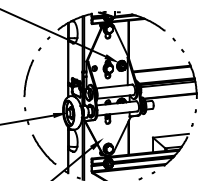
12 GA COMMERCIAL 'A' FRAME TOP BRACKET ATTACHED WITH (4) 1/4-14x7/8" SELF DRILLING CRIMPITTE SCREWS



DETAIL A

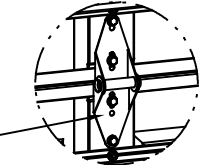
ADD (2) 1/4-14x7/8" SELF DRILLING CRIMPITTE SCREWS (INSIDE OF EACH END HINGE)

2" NYLON STORMGARD ROLLER WITH 4-1/2" STEM AND 7/16" PUSHNUT AT EACH ROLLER LOCATION. 1/4" MAX BETWEEN PUSHNUT AND BRACKET OR HINGE. OPTIONAL- 11 BALL BEARING NYLON ROLLER



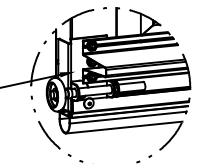
DETAIL B

#1 HINGE IS 14 GA
#2 HINGE IS 13 GA
#3 HINGE (AND ALL ABOVE) ARE 13 GA WIDE BODY END HINGE ATTACHED WITH (4) 1/4-14x5/8" SELF TAPPING SCREWS



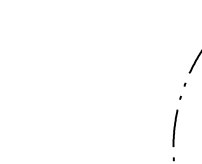
DETAIL C

18 GA NARROW BODY INTERMEDIATE HINGE ATTACHED WITH (4) 1/4-14x5/8" SELF TAPPING SCREWS

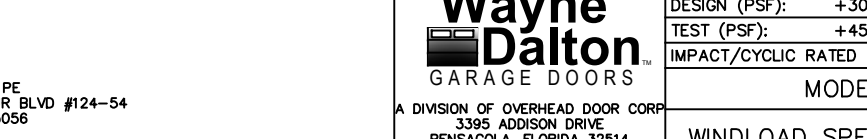
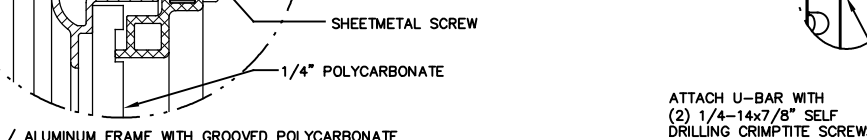
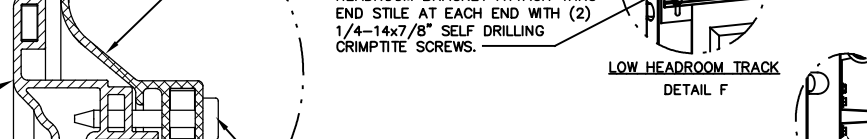
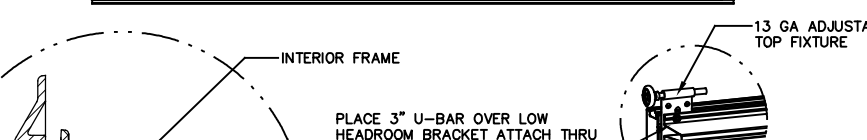
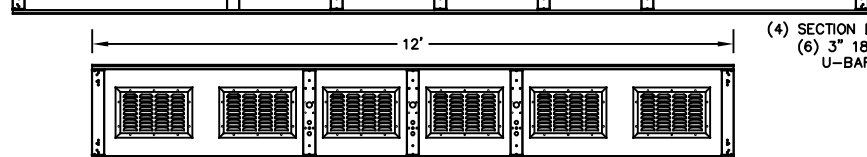
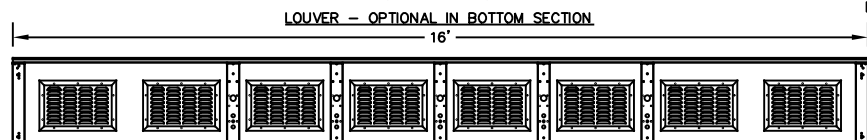
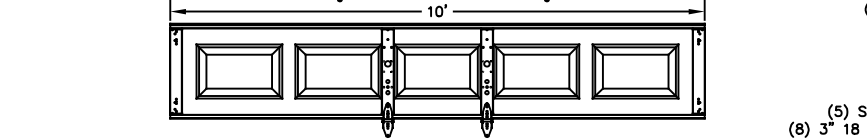
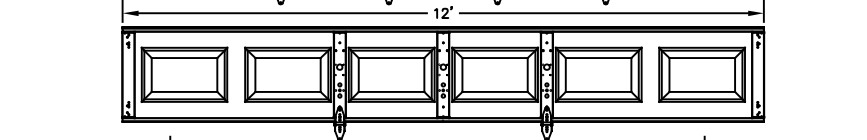
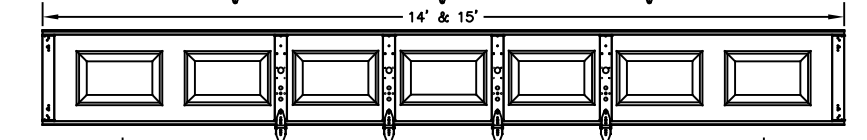
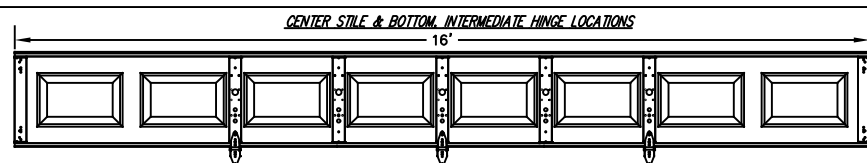


DETAIL D

14 GA BOTTOM BRACKET ATTACHED WITH (4) 1/4-14x7/8" SELF DRILLING CRIMPITTE SCREWS (2) OF WHICH IS THROUGH STRUT AND AND (1) 1/4-14x5/8" SELF DRILLING RED SCREW



DETAIL E



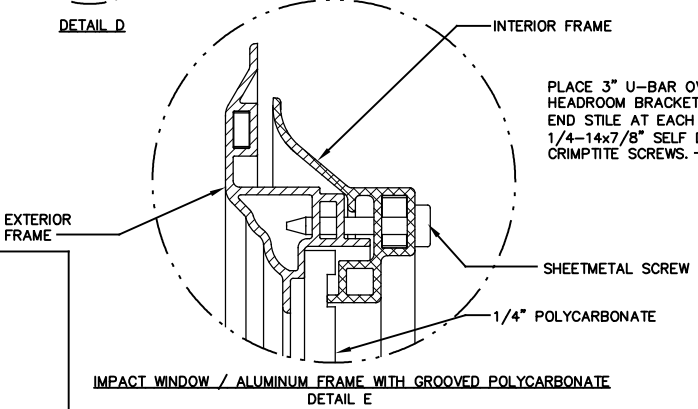
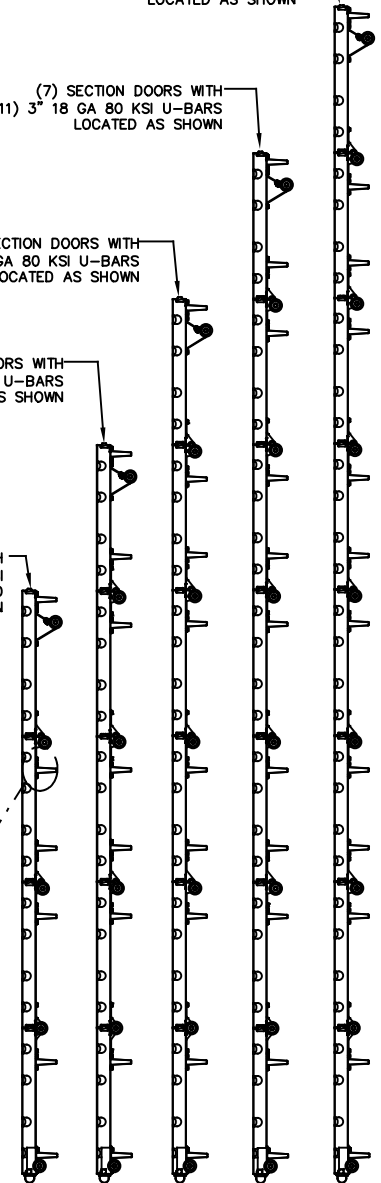
U-BAR LOCATIONS
(8) SECTION DOORS WITH (12) 3" 18 GA 80 KSI U-BARS LOCATED AS SHOWN

(7) SECTION DOORS WITH (11) 3" 18 GA 80 KSI U-BARS LOCATED AS SHOWN

(6) SECTION DOORS WITH (9) 3" 18 GA 80 KSI U-BARS LOCATED AS SHOWN

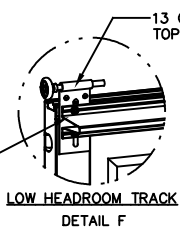
(5) SECTION DOORS WITH (8) 3" 18 GA 80 KSI U-BARS LOCATED AS SHOWN

(4) SECTION DOORS WITH (6) 3" 18 GA 80 KSI U-BARS LOCATED AS SHOWN



IMPACT WINDOW / ALUMINUM FRAME WITH GROOVED POLYCARBONATE
DETAIL F

PLACE 3" U-BAR OVER LOW HEADROOM BRACKET ATTACH THRU END STILE AT EACH END WITH (2) 1/4-14x7/8" SELF DRILLING CRIMPITTE SCREWS.



LOW HEADROOM TRACK
DETAIL F

ATTACH U-BAR WITH (2) 1/4-14x7/8" SELF DRILLING CRIMPITTE SCREWS AT EACH STILE LOCATION, TYP.

Wayne Dalton
GARAGE DOORS™

A DIVISION OF OVERHEAD DOOR CORP.
3395 ADDISON DRIVE
PENSACOLA, FLORIDA 32514
(850) 474-9890

STATIC PRESSURE RATINGS		APPROVED SIZES		SCALE: N.T.S.	SIZE: A
DESIGN (PSF):	+30.00/-33.50	MAX WIDTH:	16'-0"	DATE	NAME
TEST (PSF):	+45.00/-50.25	MAX HEIGHT:	14'-0"	DRAWN	GRT
IMPACT/CYCLIC RATED (YES/NO):	YES	MAX SECTION HEIGHT:	21"	CHECKED	TLC
MODELS 8000/8100/8200				SHEET 2 OF 2	
WINDLOAD SPECIFICATION OPTION CODE 1123				DRAWING PART NO.	REV.
				327017	H

JOHN E. SCATES, PE
2560 KING ARTHUR BLVD #124-54
LEWISVILLE, TX 75056
FL PE 51737
TX PE 56308/F2203

PROFESSIONAL ENGINEER'S SEAL PROVIDED ONLY FOR VERIFICATION OF WINDLOAD CONSTRUCTION DETAILS.